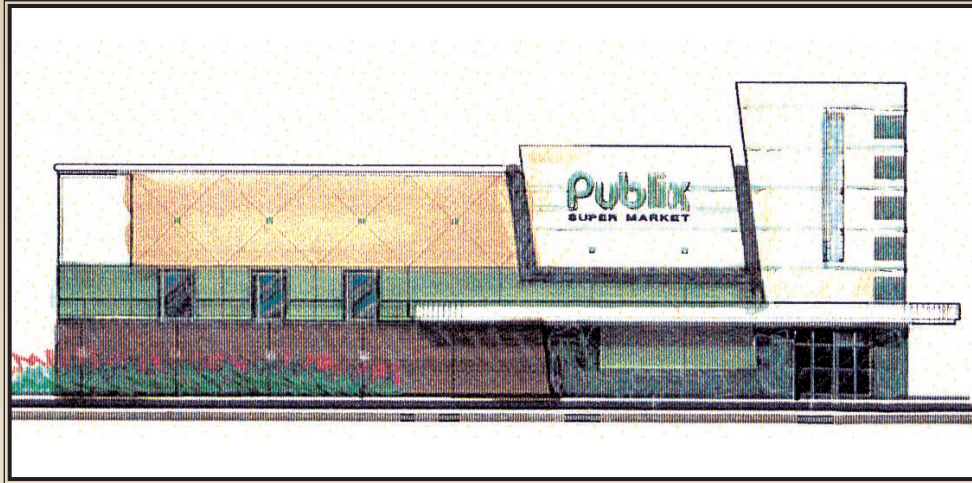


MAITLAND PLACE

ORLANDO



Maitland Place is located at the NEC of US 17/92 (Orlando Ave.) and Horatio Avenue in Maitland, Florida.

Maitland Place • NEC of US 17/92 (Orlando Ave.) and Horatio Avenue • Maitland, Florida

Market

Maitland Place enjoys one of the most stable and affluent residential trade areas of the Orange County market. This community is made up of white-collar working professionals and has an average household income of \$91,250 within one mile.

Advantages

An excellent location, great neighborhood access and limited commercial competition within the immediate trade area will provide the merchants of Maitland Place with all the ingredients for success.

Join our upscale retailers

Publix

Food & Pharmacy
and other retailers

Contact: **Randy Holihan** email: rholihan@thebrandoncompany.com

Phone 407-835-9000 • Fax 407-835-9955 • Toll Free 800-616-6266

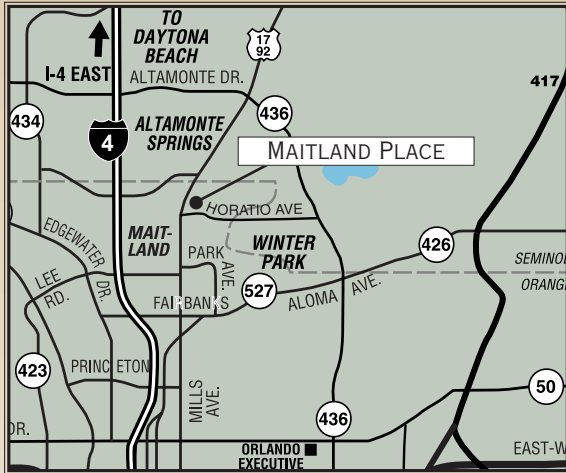
200 Pasadena Place Orlando, FL 32803

www.thebrandoncompany.com

TheBrandon
Company

MAITLAND PLACE

ORLANDO



Description	1 Mile	2 Miles	3 Miles
Population			
2007 Projection	7,232	38,594	96,606
2002 Update	6,377	35,490	90,515
2000 Census	6,023	34,243	88,105
Housing Units			
2007 Projection	2,903	16,015	41,797
2002 Update	2,573	14,628	38,607
2000 Census	2,431	14,065	37,336
Population by Race			
White	89.02%	78.34%	78.41%
Black	7.56%	15.41%	13.39%
Asian / Pacific Islander	1.31%	1.64%	2.25%
Other Races	2.11%	4.61%	5.95%
Hispanic Population	4.64%	9.07%	11.59%
2002 Estimated Households by Income			
\$150,000 or More	14.53%	9.41%	6.47%
\$100,000 - \$149,999	12.46%	9.50%	7.79%
\$ 75,000 - \$ 99,999	13.75%	11.29%	10.25%
\$ 50,000 - \$ 74,999	20.73%	19.97%	20.91%
\$ 35,000 - \$ 49,999	13.84%	15.10%	17.15%
\$ 25,000 - \$ 34,999	10.18%	12.41%	13.24%
Under \$25,000.00	14.55%	22.32%	24.19%
2002 Estimated Income			
Average HH Income	\$91,250	\$77,79	\$67,790
Median HH Income	\$63,834	\$50,22	\$46,000
Per Capita Income	\$37,153	\$32,714	\$29,803
2002 Estimated Age			
Median Age	37.66	42.06	39.74

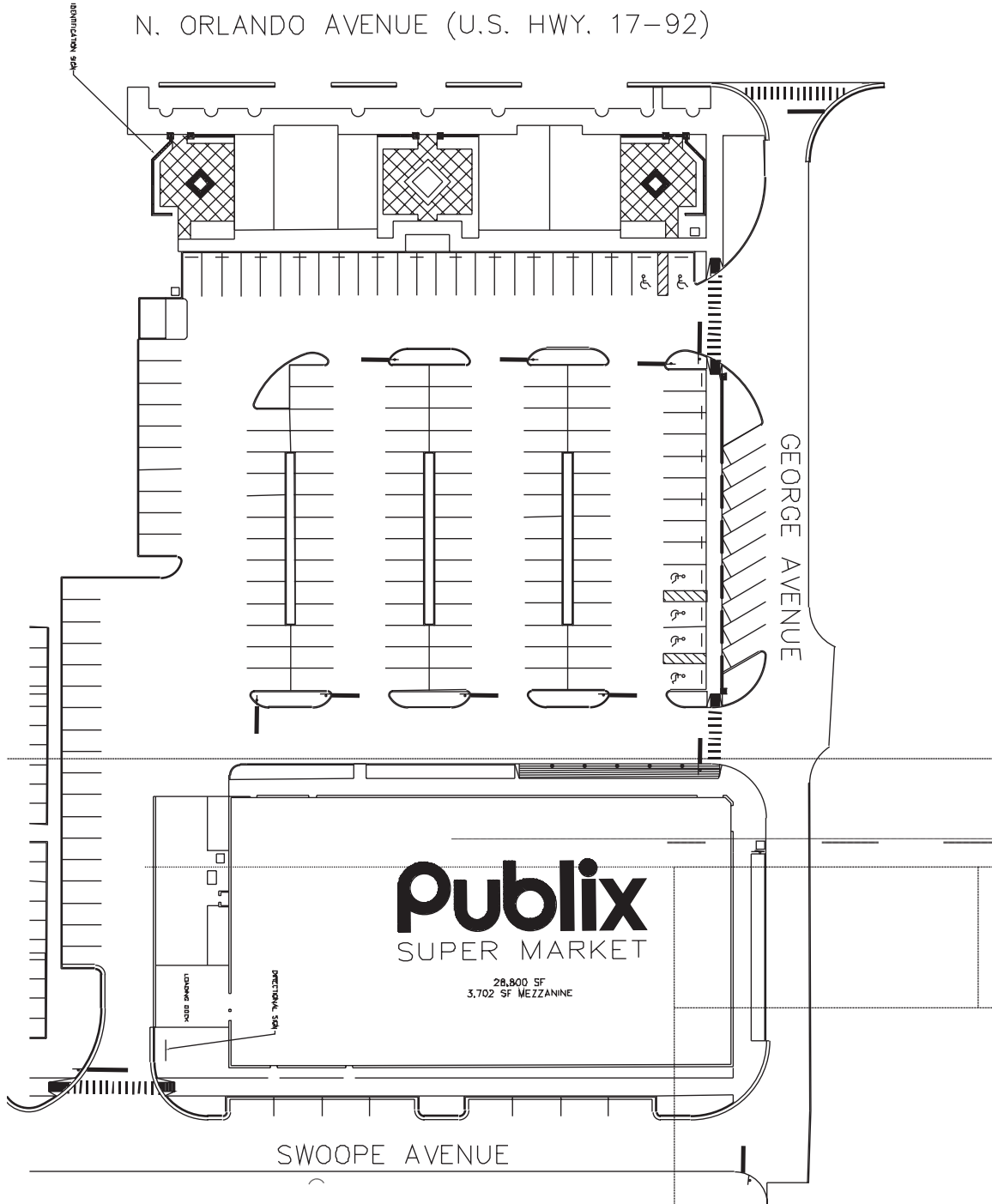
200 Pasadena Place, Orlando, Florida 32803 • Toll Free: 800-616-6266

The Brandon
Company

MAITLAND PLACE

ORLANDO

N. ORLANDO AVENUE (U.S. HWY. 17-92)



The Brandon Company